

# AIRWAY VISTA 2019

Optimization of the Diagnosis and Management in Airway Diseases

## FINAL REPORT

March 30(SAT)-March 31(SUN), 2019

Asan Medical Center, Seoul, Korea

Organized by\_



Clinical Research Center for  
Chronic Obstructive Airway Diseases



OLD RF Obstructive Lung Disease  
Research Foundation





# Contents

Introduction	03
Program Overview	04
Speakers	06
Previous Speakers of Airway Vista (2008~2018)	07
The 21 <sup>st</sup> ANOLD Meeting	10
Luncheon Symposia	11
Panel Discussion	12
Poster Discussion Session	13
Photo Gallery	14



# Introduction



Airway Vista 2019, Chronic Obstructive Airway Diseases Symposium, was held March 30[Sat] - March 31[Sun], 2019 at Asan Medical Center in Seoul, South Korea.

The Airway Vista has been hosted by the Obstructive Lung Disease Research Foundation, South Korea, since 2008. It ended in great success with 26 speakers and 294 audiences this year.

The scientific program of the symposium includes the most significant advances in the researches of chronic airway diseases, COPD and asthma. We invited several world-renowned speakers, who are leading researchers in the field of COPD and asthma in the world. The participants of the Symposium were given the opportunity to share their cutting-edge knowledge in chronic obstructive airway diseases.

We hope you to have shared many intellectual rewards and cordial experiences with you during the Airway Vista 2019.



# Program Overview



March 30 [SAT]

08:30-09:00	Registration	
09:00-09:05	Welcome message	<b>Sang-Do Lee</b> , Chairman, Organizing Committee for Airway Vista 2019
09:05-09:10	Congratulatory message	<b>In-Won Park</b> , Chairman, The Korean Academy of Tuberculosis and Respiratory diseases
09:10-09:15	Congratulatory message	<b>Ho Joo Yoon</b> , Chairman, The Korean Academy of Asthma, Allergy, and Clinical Immunology
09:15-10:30	<b>Plenary 1: Comprehensive Perspectives in Airway Diseases (English) [Grand Auditorium]</b>	<b>Sang-Do Lee</b>
09:15-09:40	Critical view on current diagnosis and classification in management of COPD	<b>Yeon-Mok Oh</b>
09:40-10:05	Biomarkers and biologics in severe asthma: navigating the maze	<b>Parameswaran Nair</b>
10:05-10:30	State of the art in bronchiectasis	<b>James Chalmers</b>
10:30-10:50	Coffee Break	
10:50-12:30	<b>Plenary 2: Hot Issues on Airway Disease (English) [Grand Auditorium]</b>	<b>In-Won Park</b>
10:50-11:15	Molecular fingerprints of severe asthma: the U-BIOPRED results	<b>Peter Sterk</b>
11:15-11:40	Interplay between epithelial cells and eosinophils in severe asthma	<b>Hae-Sim Park</b>
11:40-12:05	Image to survival: Predicting mortality of COPD with data-driven approach of CT	<b>Joon Beom Seo</b>
12:05-12:30	The natural history of COPD – starting when?	<b>Jorgen Vestbo</b>
12:30-14:00	<b>Luncheon Session : The right treatments for the right patients [Grand Auditorium]</b>	
14:00-15:20	<b>Phenotype and Subtype in Airway Disease (English) [Grand Auditorium]</b>	<b>New Evidence and Technology in the Management of Asthma (Korean) [Auditorium]</b>
	<b>Ho Joo Yoon</b>	<b>Jung-Won Park</b>
14:00-14:20	COPD phenotypes and subtypes	Optimal management of mild asthma: asthma paradox
	<b>Michael Cho</b>	<b>Tae-hoon Lee</b>
14:20-14:40	Exacerbation phenotypes in COPD	Control of asthma in real life
	<b>James Chalmers</b>	<b>Sung-Yoon Kang</b>
14:40-15:00	Eosinophils and COPD: a complex relationship	Technology interventions for preventing asthma exacerbation
	<b>Parameswaran Nair</b>	<b>Min Kyu Kang</b>
15:00-15:20	Asthma phenotype and endotype	How to choose biologics in severe asthma
	<b>Tae-Bum Kim</b>	<b>Yu Sub Shin</b>
15:20-15:40	Coffee Break	
15:40-17:00	<b>Multimomics (English) [Grand Auditorium]</b>	<b>Non-Pharmacological and Pharmacological Treatment of COPD (Korean) [Auditorium]</b>
	<b>Jung Hyun Chang</b>	<b>Ki-Suck Jung</b>
15:40-16:00	Lessons from genetics of COPD	The nutrition in airway disease; evidence and limitation
	<b>Michael Cho</b>	<b>Sei Won Lee</b>
16:00-16:20	Transcriptome and proteome in airway disease	Physical activity in patients with COPD
	<b>Choon-Sik Park</b>	<b>Ki-Uk Kim</b>
16:20-16:40	Role of microbiome and nanovesicles in asthma and COPD	Airway disease in elderly; can we differentiate asthma and COPD?
	<b>Yoon-Keun Kim</b>	<b>Ji Ye Jung</b>
16:40-17:00	Breathomics for diagnosis and phenotyping of patients with asthma, COPD and lung cancer at point of care	The era of LAMA/LABA in COPD: which one is better?
	<b>Peter Sterk</b>	<b>Chang-Hoon Lee</b>



## March 31 [SUN]

08:30-09:00	Registration	
09:00-10:40	<b>Current Issues on Guidelines, COPD &amp; Asthma (English) [Auditorium]</b>	<b>Yeon-Mok Oh</b>
09:00-09:20	GOLD - Revision and directions	<b>Jorgen Vestbo</b>
09:20-09:40	Korean guideline in comparison with GOLD	<b>Kwang Ha Yoo</b>
09:40-10:00	Current issues on Japanese COPD guidelines	<b>Masaru Suzuki</b>
10:00-10:20	Current issues on GINA guidelines	<b>Yoon-Seok Chang</b>
10:20-10:40	Application of CAT VS mMRC in COPD guideline	<b>Paul W. Jones</b>
10:40-11:00	Coffee Break	
11:00-12:30	<b>Panel Discussion (English) [Auditorium]</b>	
11:00-11:10	Hot issue 1: COPD & ICS	<b>Hye Yun Park</b>
11:10-11:30	Panel discussion	<b>Hoil Yoon, Joo Hun Park, Jorgen Vestbo, Paul W. Jones</b>
11:30-11:40	Hot issue 2: severe asthma: Anti-IgE or anti-eosinophils?	<b>Woo-Jung Song</b>
11:40-12:00	Panel discussion	<b>You Sook Cho, Sae-Hoon Kim, Peter Sterk, Parameswaran Nair</b>
12:00-12:10	Hot issue 3: adverse effect of current treatments in airway disease	<b>Heung-Woo Park</b>
12:10-12:30	Panel discussion	<b>Ji Ye Jung, Jae-Woo Kwon, Jorgen Vestbo, Paul W. Jones</b>
12:30-13:30	<b>Luncheon Session : Bronchiectasis Korea [Seminar 5]</b>	
13:30-15:30	Poster Discussion: Asthma / COPD [Seminar 7]	
15:30-16:30	Asian Bronchiectasis Meeting [Seminar 3]	



# Speakers

## INTERNATIONAL SPEAKERS



**Jorgen Vestbo**

The University of  
Manchester, UK



**Peter Sterk**

University of Amsterdam,  
Netherlands



**Parameswaran Nair**

McMaster University,  
Canada



**Paul W Jones**

Global Medical Expert GSK  
St George's University of  
London, UK



**James Chalmers**

GSK/British Lung  
Foundation  
University of Dundee, UK



**Michael Cho**

Brigham and Women's  
Hospital, Harvard Medical  
School, USA



**Masaru Suzuki**

Hokkaido University, Japan

## DOMESTIC SPEAKERS



**Choon-sik Park**

Soonchunhyang University  
Bucheon Hospital, Bucheon,  
Korea



**Hae-sim Park**

Ajou University Hospital,  
Suwon, Korea



**Yoon Keun Kim**

Ewha Womans University  
School of Medicine and  
Medical Center, Seoul,  
Korea



**Kwang Ha Yoo**

Konkuk University Medical  
Center, Seoul, Korea



**Yeon-Mok Oh**

Asan Medical Center,  
Seoul, Korea



**Joon Beom Seo**

Asan Medical Center,  
Seoul, Korea



**Yoon-Suk Chang**

Seoul National University  
Bundang Hospital,  
Seongnam, Korea



**Heung-Woo Park**

Seoul National University  
Hospital, Seoul, Korea



**Tae-Bum Kim**

Asan Medical Center,  
Seoul, Korea



**Sei Won Lee**

Asan Medical Center,  
Seoul, Korea



**Taehoon Lee**

Ulsan University Hospital,  
Ulsan, Korea



**Yoo Seob Shin**

Ajou University Hospital,  
Suwon, Korea



**Chang-Hoon Lee**

Seoul National University  
Hospital, Seoul, Korea



**Woo-Jung Song**

Asan Medical Center,  
Seoul, Korea



**Hye Yun Park**

Samsung Medical Center,  
Seoul, Korea



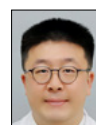
**Ki-Uk Kim**

Pusan National University  
Hospital, Busan, Korea



**Ji Ye Jung**

Yonsei University, Severance  
Hospital, Seoul, Korea



**Sung-Yoon Kang**

Gachon University Gil  
Medical Center, Incheon,  
Korea



**Min-Gyu Kang**

Chungbuk national university  
hospital, Cheongju, Korea

# Previous Speakers of Airway Vista (2008~2018)

## 2018

### Stephanie London

National Institute of Environmental Health Sciences, USA

### Alyn Morice

Head Cardiorespiratory Studies  
Hull York Medical School, University of Hull, Castle Hill  
Hospital, Cottingham, UK

### Sundeeep S Salvi

Chest Research Foundation, India

### Graham Barr

Department of Medicine, College of Physicians and  
Surgeons, Columbia University Medical Center, New York,  
USA

### Brian Oliver

School of Life Sciences  
University of Technology Sydney, Australia

### David Price

Observational and Pragmatic Research Institute,  
Singapore, Singapore

### Le Thi Tuyet Lan

Department of Physiology, University of Medicine and  
Pharmacy at Ho Chi Minh City (HCMC), Vietnam

### Namhee Kwon

Respiratory Global Franchise, GSK

### Joon Beom Seo

Asan Medical Center, Seoul

### Yeon-Mok Oh

Asan Medical Center, Seoul

### Eun Mi Chun

Ewha Womans university mokdong hospital

### Sei Won Lee

Asan Medical Center, Seoul

### Jung-Kyu Lee

Seoul Metropolitan Governmental Seoul National  
University (SMG-SNU) Boramae Medical Center, Seoul

### Eunyoung Kim

Asan Medical Center, Seoul

### Soo-Jong Hong

Asan Medical Center, Seoul

### You Sook Cho

Asan Medical Center, Seoul

### Woo-Jung Song

Seoul National University Hospital, Seoul

### Sae-Hoon Kim

Seoul National University Bundang Hospital

### Joo-Hee Kim

Sacred Heart Hospital Hallym University

### Jae Hyun Lee

Yonsei University, Severance Hospital

### Jae Chun Lee

Jeju National University Hospital

### Jae Seung Lee

Asan Medical Center, Seoul

### Chin Kook Rhee

Seoul St. Mary's Hospital

## 2017

### Norbert F. Voelkel

Virginia Commonwealth University (VCU) Medical  
Center, USA

### Edwin Silverman

Harvard Medical School, USA

### Kian Fan Chung

National Heart & Lung Institute, Imperial College  
London, UK

### Meilan Han

University of Michigan, USA

### Paul W. Jones

University of London, UK

### Yasutaka Nakano

Shiga University of Medical Science, Japan

### Quan Lu

Harvard T.H. Chan School of Public Health, USA

### David Lynch

National Jewish Health, USA

### Hae-Sim Park

Ajou University School of Medicine and Graduate  
School of Ajou University, Suwon

### Young Il Ko

Chonnam National University Medical School, Gwangju

### Jae Yeol Kim

Chung-Ang University College of Medicine, Seoul

### Jae Woo Kwon

Kangwon National University Hospital, Chuncheon

### Woo-Jung Song

Seoul National University Hospital, Seoul

### Chan Sun Park

Haeundae Paik Hospital, Inje University, Busan

### Hye Yun Park

Samsung Medical Center, Seoul

### Seo Young Lee

Hallym University Kangdong Sacred Heart Hospital,  
Seoul

### Jong Hwa Jeong

Pusan National University Hospital, Busan

### Sun Young Kim

Asan Medical Center, Seoul

### Hee Jung Suh

Asan Medical Center, Seoul

### Hun Sil Kim

Asan Medical Center, Seoul

## 2016

### Leonardo M. Fabbri

University of Modena & Reggio Emilia, Italy

### Nicola A. Hanania

Baylaor College of Medicine, USA

### Richard Casaburi

University of California, Los Angeles (UCLA), USA

### Maciej Kupczyk

Medical University of Lodz, Poland

### Victor Kim

Temple University School of Medicine, USA

### Allison Lambert

Johns Hopkins University, USA

### Chunxue Bai

Zhongshan Hospital, Fudan University, China

### Yoshiharu Ohno

Kobe University Graduate of Medicine, Japan

### Sang Do Lee

Asan Medical Center, Korea

### Yeon Mok Oh

Asan Medical Center, Korea

### Young Sam Kim

Yonsei University, Severance Hospital, Korea

### Chin Kook Rhee

Seoul St. Mary's Hospital, Korea

### Yong Beom Park

Kangdong Sacred Heart Hospital Hallym University,  
Korea

### Hye Sook Choi

Dongguk University Gyeongju Hospital, Korea

### Joon Beom Seo

Asan Medical Center, Korea

### Yu Il Kim

Chonnam National University Hospital, Korea

### Yong Beom Shin

Pusan National University Hospital, Korea

### An Soo Jang

Soonchunhyang University Hospital, Korea

### Sang Heon Kim

Hanyang University Seoul Hospital, Korea

### Woo Jung Song

Seoul National University Hospital, Korea

### Tae Hoon Lee

Ulsan University Hospital, Korea

### Hye Ryun Kang

Seoul National University Hospital, Korea

### Chang Hyun Lee

Seoul National University Hospital, Korea

### Heon Sil Kim

Asan Medical Center, Korea

### Ji Yeon Min

Asan Medical Center, Korea

## 2015

### Yasutaka Nakano

Shiga University of Medical Science, Japan

### Yoshiharu Ohno

Kobe University Graduate School of Medicine, Japan

**Reynold A. Panettieri**  
University of Pennsylvania, USA

**Michael Tamm**  
University Hospital Basel, Switzerland

**J. Michael Wells**  
University of Alabama at Birmingham, USA

**Robert A. Wise**  
Johns Hopkins Asthma and Allergy Center, USA

**Prescott Woodruff**  
University of California San Francisco, USA

**Sang-Do Lee**  
Asan Medical Center, Korea

**Yeon-Mok Oh**  
Asan Medical Center, Korea

**You Sook Cho**  
Asan Medical Center, Korea

**Joon Beom Seo**  
Asan Medical Center, Korea

**Tae-Bum Kim**  
Asan Medical Center, Korea

**Sei Won Lee**  
Asan Medical Center, Korea

**Jae Seung Lee**  
Asan Medical Center, Korea

**Ji-Hyun Lee**  
CHA Bundang Medical Center, Korea

**Tae-Hyung Kim**  
Hanyang University Guri Hospital, Korea

**Hye Yun Park**  
Samsung Medical Center, Korea

**Jin Hwa Lee**  
Ewha Womans University Mokdong Hospital, Korea

**Sang Pyo Lee**  
Gachon University Gil Medical Center, Korea

**Cheol-Woo Kim**  
Inha University Hospital, Korea

**Sang-Heon Kim**  
Hanyang University Seoul Hospital, Korea

**Chang-Hoon Lee**  
Seoul National University Hospital, Korea

**Deog Kyeom Kim**  
Seoul National University Boramae Medical Center, Korea

**Yoon-Keun Kim**  
Ewha Womans University School of Medicine, Korea

**Eun Mi Kim**  
Kangbuk Samsung Hospital, Korea

**Mi-Sook Lee**  
Yeungnam University Hospital, Korea

**Sun Young Kim**  
Asan Medical Center, Korea

## 2014

**Paul Jones, Ph.D, FRCP**  
George's University of London, UK

**Alberto Papi, MD**  
University of Ferrara, Italy

**David A. Schwartz, MD**  
University of Colorado, USA

**Sanjay Sethi, MD, FACP**  
University of Buffalo at the State University of New York, USA

**Don D. Sin, MD, MPH**  
University of British Columbia, Canada

**Jadwiga A. Wedzicha, MD**  
University College London, UK

**Won-Kyung Cho, MD**  
Yale University School of Medicine, USA

**Min-Jong Kang, MD, Ph.D**  
Yale University School of Medicine, USA

**Jiyoun Kim, Ph.D**  
Boston University School of Medicine, USA

**Gye Young Park, MD**  
University of Illinois at Chicago, USA

**Jin-Ah Park, Ph.D**  
Harvard University, School of Public Health, USA

**You Sook Cho, MD, Ph.D**  
Asan Medical Center, Korea

**Joon Beom Seo, MD, Ph.D**  
Asan Medical Center, Korea

**Sei Won Lee, MD, Ph.D**  
Asan Medical Center, Korea

**Ho Joo Yoon, MD, Ph.D**  
Han Yang University Medical Center, Korea

**Sang-Do Lee, MD, Ph.D**  
Asan Medical Center, Korea

**Yong Bum Park, MD**  
Kangdong Sacred Heart Hospital Hallym University, Korea

**Chang-Hoon Lee, MD, Ph.D**  
Seoul National University Hospital, Korea

**Sang Yeub Lee, MD, Ph.D**  
College of Medicine, Korea University, Korea

**Deog Kyeom Kim, MD, Ph.D**  
Seoul National University Boramae Medical Center, Korea

**Byung-Jae Lee, MD, Ph.D**  
Samsung Medical Center, Korea

**Sang-Hoon Kim, MD, Ph.D**  
Eulji General Hospital, Korea

**Seong Yong Lim, MD, Ph.D**  
Kangbuk Samsung Medical Center, Korea

**Cheolseok kwon**  
Asan Medical Center, Korea

**Young Ho Kim**  
Asan Medical Center, Korea

**Yun Ok Kim**  
Asan Medical Center, Korea

**Hye Young Cha**  
Ulsan University Hospital, Korea

**Mi Hee Seo**  
Seoul National University Hospital, Korea

**Seung Hee Seo**  
Asan Medical Center, Korea

## 2013

**Richard K. Albert, MD**  
Denver Health and University of Colorado Denver, U.S.

**Augustine Choi, MD**  
Harvard Medical School, Brigham and Women's Hospital Boston, U.S.

**MeiLan K. Han, MD, MS**  
University of Michigan Ann Arbor, Michigan, U.S.

**Mary Ip, MD**  
Queen Mary Hospital  
University of Hong Kong

**Edwin Silverman, MD, Ph.D**  
Harvard Medical School, Brigham and Women's Hospital Boston, U.S.

**Rubin Tudor, MD**  
University of Colorado Denver, U.S.

**Felix JF Herth, MD, Ph.D, FCCP**  
Pneumology and Respiratory Care Medicine Thoraxklinik, University of Heidelberg, Germany

**Atul C. Mehta, MD, FACP, FCCP**  
Respiratory Institute Cleveland Clinic Foundation Ohio, U.S.

**Koichiro Asano, MD**  
Tokai University School of Medicine, Japan

**Sang Do Lee, MD, Ph.D**  
Asan Medical Center, Korea

**Joon Beom Seo, MD, Ph.D**  
Asan Medical Center, Korea

**You Sook Cho, MD, Ph.D**  
Asan Medical Center, Korea

**Choon-Sik Park, MD, Ph.D**  
Soonchunhyang University Bucheon Hospital, Korea

**Jae Jeong Shim, MD, Ph.D**  
Korea University Medical Center, Korea

**An Soo Jang, MD, Ph.D**  
Soonchunhyang University Bucheon Hospital, Korea

**Kwang Ha Yoo, MD, Ph.D**  
Konkuk University, School of Medicine, Seoul, Korea

**Hye-Ryun Kang, MD, Ph.D**  
Seoul National University School of Medicine, Korea

**Yong Bum Park, MD, Ph.D**  
Kangdong Sacred Heart Hospital Hallym University, Korea

**Cheolseok Kwon**  
Asan Medical Center, Korea

**Mi Ok Choi**  
Yonsei University, Severance Hospital, Korea

**Mi-Sook Lee**  
Yeungnam University Hospital, Korea

**Won Gyoung Kim**  
Seoul National University Hospital, Seoul, Korea

**Hyun Ju Lee**  
Asan Medical Center, Korea

**Sang Mi Han**  
Asan Medical Center, Korea

## 2012

**Phil Bardin, M.B.Ch.B., Ph.D**  
Monash University, Australia

**Ronald Dahl, MD**  
University Hospital of Aarhus, Denmark

**Kirthi Dias Gunasekera, MD, Ph.D**  
Central Chest Clinic, Sri Lanka

**Richard Loh, MD, Ph.D**  
Penang Medical College, Malaysia

**Masaharu Nishimura, MD, Ph.D**  
Hokkaido University School of Medicine, Japan

**Marc Peters-Golden, MD**  
University of Michigan Hospital & Health Systems, USA

**Don Sin, MD, MPH**  
University of British Columbia, Canada



**Sonal Singh, MD, MPH**  
Johns Hopkins University School of Medicine, USA

**Michael Wechsler, MD, MMSc.**  
Harvard's Brigham & Women's Hospital, USA

**You Sook Cho, MD, Ph.D**  
University of Ulsan College of Medicine, Korea

**Sang Do Lee, MD, Ph.D**  
University of Ulsan College of Medicine, Korea

**Heung-Woo Park, MD, Ph.D**  
Seoul National University College of Medicine, Korea

**Joon Beom Seo, MD, Ph.D**  
University of Ulsan College of Medicine, Korea

**Kyeong-Cheol Shin, MD, Ph.D**  
Yeungnam University College of Medicine, Korea

**Sang Yeub Lee, MD, Ph.D**  
College of Medicine, Korea University, Korea

**Sung Chul Lim, MD, Ph.D**  
Chonnam National University Hospital, Korea

**Hyoungkyu Yoon, MD, Ph.D**  
St.Mary's Hospital, College of Medicine, The Catholic University of Korea

**Jeong-Hwa Chung**  
Hallym University Medical Center, Korea

**Eun Hee Kang, Ph.D**  
Asan Medical Center, Korea

**Sun Young Kim**  
Asan Medical Center, Korea

**Young Ho Kim**  
Asan Medical Center, Korea

**Yun Ok Kim, Ph.D**  
Asan Medical Center, Korea

**Cheolseok Kwon**  
Asan Medical Center, Korea

**Hye Sun Shin, Ph.D**  
Severance Hospital, Yonsei University, Korea

## 2011

**Arvind Bhome, MD**  
Aditya Birla Memorial Hospital, India

**Eugene R. Bleecker, MD**  
Wake Forest University School of Medicine, USA

**Yoon Seok Chang, MD**  
Seoul National University Hospital, Korea

**You Sook Cho, MD**  
University of Ulsan College of Medicine and Asan Medical Center, Korea

**Sang Bum Hong, MD**  
University of Ulsan College of Medicine and Asan Medical Center, Korea

**Eun Hee Kang**  
Asan Medical Center, Korea

**Young Sam Kim, MD**  
Severance Hospital, University of Yonsei, Korea

**Yun Ok Kim**  
Asan Medical Center, Korea

**Han-Pin Kuo, MD**  
Chang Gung University, Taiwan

**Heung-Kyu Lee**  
Graduate School of Medical Science and Engineering, KAIST, Korea

**Ji-Hyun Lee, MD**  
CHA Bundang Medical Center, CHA University, Korea

**Sang-Do Lee, MD**  
University of Ulsan College of Medicine and Asan Medical Center, Korea

**Fernando J. Martinez, MD**  
University of Michigan Medical Center, USA

**Deborah A. Meyers, MD**  
Wake Forest University School of Medicine, USA

**Yeon-Mok Oh, MD**  
University of Ulsan College of Medicine and Asan Medical Center, Korea

**Hae-Sim Park, MD**  
Ajou University Medical Center, Korea

**Yong Bum Park, MD**  
Hallym University College of Medicine, Korea

**Joon Beom Seo, MD**  
University of Ulsan College of Medicine and Asan Medical Center, Korea

**Kwang Ha Yoo, MD**  
Konkuk University Medical Center, Korea

**Norbert F. Voelkel, MD**  
Virginia Commonwealth University, USA

## 2010

**Malcolm R. Sears, MD**  
McMaster University, Canada

**Masaharu Nishimura, MD**  
Hokkaido University Hospital, Japan

**David M. Mannino, MD**  
University of Kentucky Medical Center, USA

**You Sook Cho, MD**  
University of Ulsan College of Medicine and Asan Medical Center, Korea

**David Henry Broide, MD**  
University of California, San Diego, USA

**Kazutetsu Aoshiba, MD**  
Tokyo Women's Medical University, Japan

**Joon Beom Seo, MD**  
University of Ulsan College of Medicine and Asan Medical Center, Korea

**Alan Ng WeiKeong, MD**  
Tan Tock Seung Hospital, Singapore

**Stephen I. Rennard, MD**  
University of Nebraska Medical Center, USA

**Chun-Xue Bai, MD**  
Zhongshan Hospital, Fudan University, China

**Ki-Suck Jung, MD**  
Hallym University Medical College, Korea

**Sang-Do Lee, MD**  
University of Ulsan College of Medicine and Asan Medical Center, Korea

**Seung-Hyo Lee**  
Graduate School of Medical Science and Engineering, KAIST, Korea

**Yoon-Keun Kim**  
Pohang University of Science and Technology, Korea

## 2009

**Sang-Do Lee, MD**  
University of Ulsan College of Medicine and Asan Medical Center, Korea

**A. Sonia Buist, MD**  
Oregon Health & Science University, USA

**Peter Martin Anthony Calverley, MD**  
The University of Liverpool, UK

**You Sook Cho, MD**  
University of Ulsan College of Medicine and Asan Medical Center, Korea

**Harvey O Coxson, MD**  
Vancouver General Hospital, Canada

**Won-Dong Kim, MD**  
Konkuk University Medical Center, Korea

**Han-Pin Kuo, MD**  
Chang Gung University, Taiwan

**William MacNee, MD**  
The Queen's Medical Research Institute, UK

**Andre Nel, MD**  
UCLA School of Medicine, USA

**Frank C Sciurba, MD**  
University of Pittsburgh, USA

**Joon Beom Seo, MD**  
University of Ulsan College of Medicine and Asan Medical Center, Korea

**Edwin Silverman, MD**  
Harvard Medical School, USA

**Masaharu Nishimura, MD**  
Hokkaido University Hospital, Japan

**Chol Shin, MD**  
Korea University Medical Center, Korea

## 2008

**Sang-Do Lee, MD**  
University of Ulsan College of Medicine and Asan Medical Center, Korea

**William Walter Busse, MD**  
University of Wisconsin Medical School, USA

**Wang Chen, MD**  
Beijing Chao-Yang Hospital, China

**Gerard Cox, MD**  
McMaster University, Canada

**Edward Patrick Ingenito, MD**  
Harvard Medical School, USA

**Sebastian L Johnston, MD**  
Imperial College, UK

**Dong-Soon Kim, MD**  
University of Ulsan College of Medicine and Asan Medical Center, Korea

**Won-Dong Kim, MD**  
Konkuk University Medical Center, Korea

**Han-Pin Kuo, MD**  
Chang Gung University, Taiwan

**Masaharu Nishimura, MD**  
Hokkaido University Hospital, Japan

**Choon-Sik Park, MD**  
Soon Chun Hyang Bucheon University Hospital, Korea

**Joon Beom Seo, MD**  
University of Ulsan College of Medicine and Asan Medical Center, Korea

**Norbert F. Voelkel, MD**  
Virginia Commonwealth University, USA

**Edwin Silverman, MD**  
Harvard Medical School, USA

# The 21<sup>st</sup> ANOLD Meeting



ANOLD, Asian Network of Obstructive Lung Disease, is a strong network of researchers connected via Asian collaboration, which encourages an integrative, in depth understanding of obstructive lung disease. Since 2008, 13 countries such as India, Nepal, Thailand, Sri Lanka, Philippines, Taiwan, Korea, Malaysia, Japan, China, Vietnam, Singapore, and Hong Kong have participated in ANOLD research. This year, 15 experts from 10 countries attended the 21st ANOLD Meeting and discussed closing the ANOLD COPD study and starting the new study regarding Bronchiectasis.

# Luncheon Symposia

## March 30(SAT)

The right treatments for the right patients



## March 31(SUN)

Bronchiectasis Korea





# Panel Discussion



---

**Hye Yun Park** : Hot Issue 1: COPD & ICS

Panel Discussion : Ho-Il Yun, Joo Hun Park, Jorgen Vestbo, Paul W.Jones

---

**Woo Jung Song** : Hot Issue 2: Severe asthma: Anti-IgE or anti-eosinophils?

Panel Discussion : You Sook Cho, Sae-Hoon Kim, Peter Sterk, Parameswaran Nair

---

**Heung-Woo Park** : Hot Issue 3: Adverse effect of current treatments in airway disease

Panel Discussion : Ji Ye Jung, Jae-Woo Kwon, Jorgen Vestbo, Paul W.Jones

---

# Poster Discussion Session



## Travel Award

Nationality	Name	Title
Australia	Brendan Jenkins	Novel role for the AIM2 inflammasome in the pathogenesis of pulmonary emphysema
Japan	Takafumi Shimada	An analysis of the "Complex Restrictive" pattern of pulmonary function in our cases

## Outstanding Abstract Award

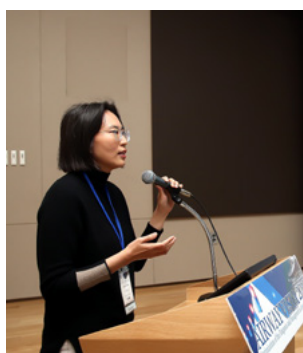
Nationality	Name	Title
Korea	Ji-Hyang Lee	Reality and clusters of severe eosinophilic asthma: Findings from a Korean asthma cohort, COREA
Korea	Ho Cheol Kim	Effects of inhaler therapy on mortality in patients with tuberculous destroyed lung and airflow limitation
Korea	Jieun Kang	Adherence to roflumilast under dose-escalation strategy in Korean patients with COPD



# Photo Gallery

## 2019

*Conference has an excellent program with good speakers . I am impressed with the organization of the conference which is truly an international conference .*







# Photo Gallery

## 2018

*"It was one of the best meetings I have been to in recent years. I look forward to coming again!"*





# 2017

*"I would congratulate the organizers of this meeting, Prof. Sang-Do Lee and all of his colleagues for making this such an important part of lung community throughout the world. I think AMC and Korean pulmonary communities should be very proud of what Airway Vista has accomplished."*

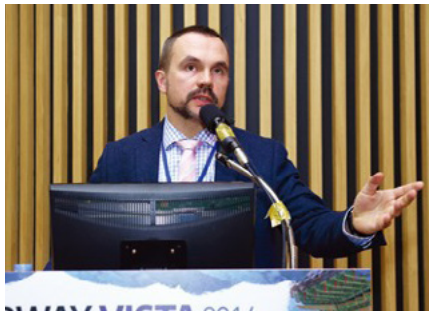




# Photo Gallery

## 2016

*"I thought the conference was well-organized, informative, and offered a comprehensive review of the most recent literature and clinical developments. The meeting was very high quality science and the hospitality was also wonderful."*



## 2015

*"I sincerely think that the Airway Vista this year was a success. There was proper coordination and the hospitality was great. I hope that we have another wonderful experience next year. Congratulations to all!"*



## 2014

*"It was a great experience for me to share the ideas of lung research with physicians and scientists from all over the world. I truly believe that all participants must have enjoyed the meeting."*

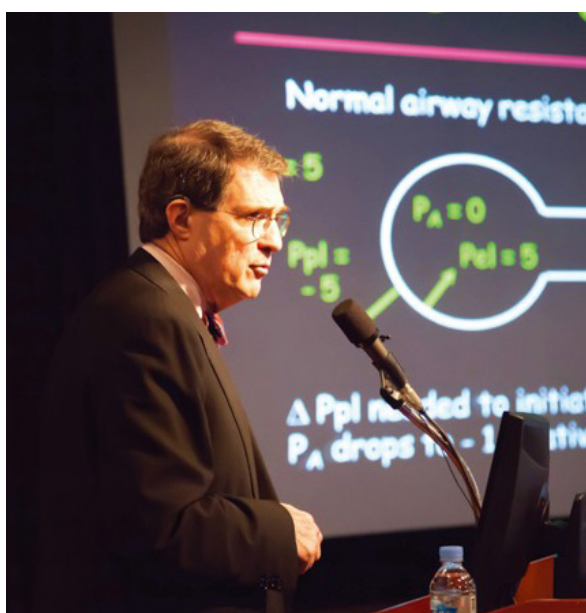




# Photo Gallery

## 2013

*"Excellent program as well as greatly helpful staffs during the meeting! Venue was also excellently arranged and prepared. During poster discussion session (Asthma) every attendee was actively participated in the discussion and looked enjoying the meeting."*



## 2012

*"Thank you very much for the great organization. Very informative and educational conference. Well scheduled."*





## 2011

*"I thought the program was very good. It was more clinically oriented than research oriented, but this is probably appropriate for the audience. The quality of the presentations was excellent."*



## 2010

*"The meeting organization, the scientific program and the social events were beyond any expectation. The meeting will be a good memory of achievement of new knowledge and great hospitality and friends."*



# Photo Gallery

## 2009

*"Topic is good, faculty are excellent! The organization, efficiency, and hospitality were all excellent. Very enjoyable and worthwhile."*



## 2008

*"I feel there was no deficiency in organizing Airway Vista at all. It was a wonderful experience both academically and as a tourist. Our best wishes and congratulation to Airway Vista Team especially Dr. Sang-Do Lee."*





# Organization

## Organizing Committee

### Chairman

**Sang-Do Lee**

Asan Medical Center, Seoul

### Members

**Yeon-Mok Oh**

Asan Medical Center, Seoul

**You Sook Cho**

Asan Medical Center, Seoul

**Sei Won Lee**

Asan Medical Center, Seoul

**Joon Beom Seo**

Asan Medical Center, Seoul

### Secretariat

**Sei Won Lee**

Asan Medical Center, Seoul

**Minjeong Jeon**

Obstructive Lung Disease Research Foundation

**Soomin Lee**

Obstructive Lung Disease Research Foundation

## Scientific Committee

### Chairman

**Yeon-Mok Oh**

Asan Medical Center, Seoul

### Co-Chair

**Tae-Bum Kim**

Asan Medical Center, Seoul

**Sei Won Lee**

Asan Medical Center, Seoul

### Members

**Hye Yun Park**

Samsung Medical Center, Seoul

**Jin Hwa Lee**

Ewha Womans University Mokdong Hospital

**Woo Jin Kim**

Kangwon National University Hospital

**Chin Kook Rhee**

Seoul St. Mary's Hospital

**Jae Seung Lee**

Asan Medical Center, Seoul

**Woo Jung Song**

Asan Medical Center, Seoul

**Hyouk-Soo Kwon**

Obstructive Lung Disease Research Foundation

**Sang Min Lee**

Asan Medical Center, Seoul



# AIRWAY VISTA 2019

Optimization of the Diagnosis and Management in Airway Diseases

Organized by\_



**Clinical Research Center for  
Chronic Obstructive Airway Diseases**



**OLD RF**

Obstructive Lung Disease  
Research Foundation